

WASTE

MATERIAL HANDLERS



FUCHS[®]

A TEREX BRAND



COMPACT AND AGILE



The MHL310 combines all advantages of a Fuchs material handling machine, without compromises. Up to 9 meters reach, high-performance cooling systems, closed slewing drive, a unique service platform, and much more. A great and compact package.

Fuchs MHL310 F

Engine Power: 85 kW

Operating Weight w/o Attachments: 14.6–17.1 t

Reach: max. 9.0 m







EXCEPTIONAL FIELD OF VISION AND PERFORMANCE



With a reach of 10.4 metres and an operating weight of 21 tonnes, this machine is the ideal solution for those who refuse to compromise on performance, efficiency and reliability. The compact version of MHL320 with 8.2 m reach is perfectly suitable for indoor application.

Fuchs MHL320 F

Engine Power: 95 kW
Operating Weight w/o Attachments: 19.3–21.0 t
Reach: max. 10.4 m



MORE POWER AND REACH WHILE RETAINING COMPACT DIMENSIONS



With its substantial reach of 12 m and high load capacity, the MHL331 is one of the top recycling models in the world. The MHL331 is the optimal solution for loading containers, shredders and walking floors.

Fuchs MHL331 F

Engine Power: 115 kW

Operating Weight w/o Attachments: 22.8–24.2 t

Reach: max. 12.0 m





THAT EXTRA BIT OF STABILITY



The Fuchs MHL335 combines the advantages of the Fuchs MHL331 with an enlarged undercarriage for exceptional stability at maximum load and reach.

Fuchs MHL335 F

Engine Power: 115 kW
Operating Weight w/o Attachments: 23.9–25.5 t
Reach: max. 12.0 m



WELL-THOUGHT-OUT MACHINE FOR MORE POWER AND REACH



Highly efficient dual-circuit hydraulics ensure that slewing manoeuvres are as swift and powerful as they are precise. Providing a 13.7 m reach and an excellent eye level up to 5.6 m makes the MHL340 a top performer in its class.

Fuchs MHL340 F

Engine Power: 129 kW

Operating Weight w/o Attachments: 28.4–30.6 t

Reach: max. 13.7 m





ATTACHMENTS AND LOADING EQUIPMENT

- Universal stick for sorting grapples
- Dipperstick for cactus or clamshell grab
- Grab rotation speed and pressure regulation
- Optimally arranged hydraulic pipes and hoses

CABIN

- Hydraulically adjustable cab
- Large skylight
- Sliding window in cab door
- Safety glass
- Automatic air conditioning system

UPPERCARRIAGE

- Separated cooling system for engine, hydraulic oil cooler and AC condenser
- Rear and side view camera
- Temperature-controlled fan drives
- Highly energy-efficient

UNDERCARRIAGE

- Mobile, crawler or stationary





SERVICE PLATFORM

- Comfortable access to engine, main hydraulic valve block, diesel, DEF tank etc.
- Safe place for service
- Unique in the market

ENGINE

Diesel engine

- Best-in-class for fuel consumption economy in its power segment
- Latest EU-Stage V emission technology
- ROW solutions
- Covered and protected EAT system

Electric motor

- Low maintenance, and operating costs
- Low noise
- Zero local emissions

GREAT FEATURES COME STANDARD WITH YOUR FUCHS



AIR-CUSHIONED COMFORT SEAT

with integrated headrest,
safety belt and lumbar
support

STORAGE SPACE

storage and cup holder air conditioned



DIGITAL DISPLAY

with large dimensions provides
great overview and info at a glance



FUCHS SERVICE PLATFORM

safe place for daily checks
and maintenance



SEPARATE COOLING SYSTEM

for engine and hydraulic oil cooler



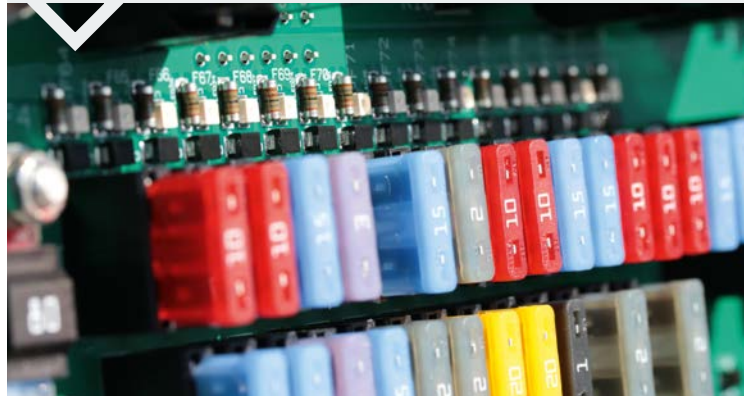
REVERSING FAN

for more cooling performance and less dirt
and debris in intercooler, water and oil-cooler



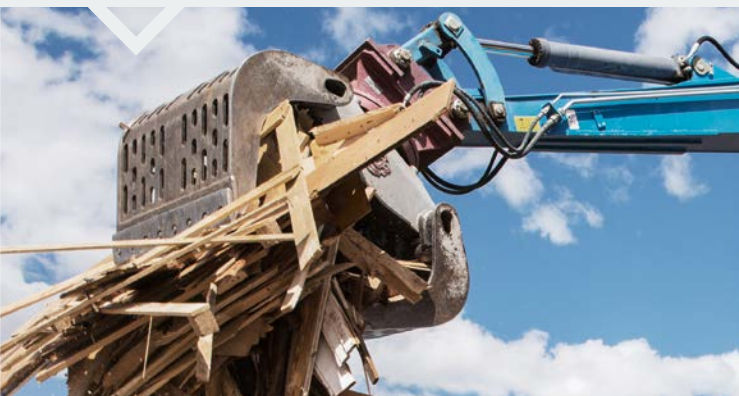
QUICK FUSE CHECK BUTTON

makes it quick and easy to check
the fuses of your Fuchs



OIL PRESSURE AND VOLUME ADJUSTMENT

makes it easy to adapt speed
of grab rotation (stepless or black & white)



AUTOMATED GREASING SYSTEM

ensures key components running smoothly



SPECIAL OPTIONS FOR WASTE APPLICATIONS



BOOM CYLINDER DAMPING SYSTEM

for smooth operations



DOZER BLADE

in addition to 4-point stabilizers
allows to push material



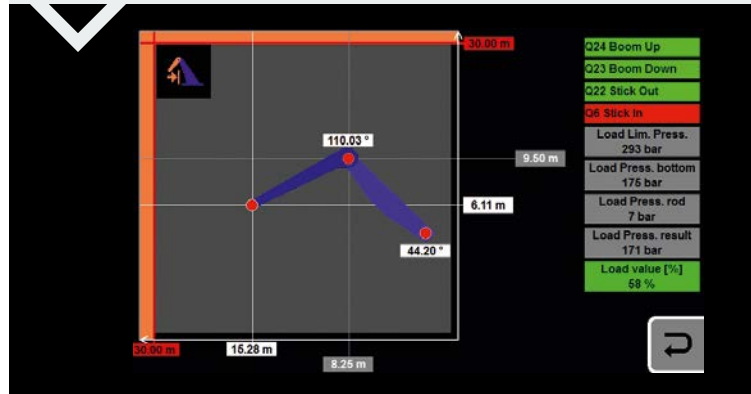
ALL-WHEEL-STEERING

reduction of the turning circle by 35%,
exceptional manoeuvrability, USP



OVERLOAD AND WORK AREA CONTROL

easy teach in, great for indoor application





**SUPPORT BLADE AND
2-POINT STABILIZERS**

UNIVERSAL STICK

when it comes to precise sorting



**HIGH PRESSURE FILTRATION SYSTEM
FOR ATTACHMENTS**

effective protection against contamination of hydraulic oil from damaged or leaking attachments

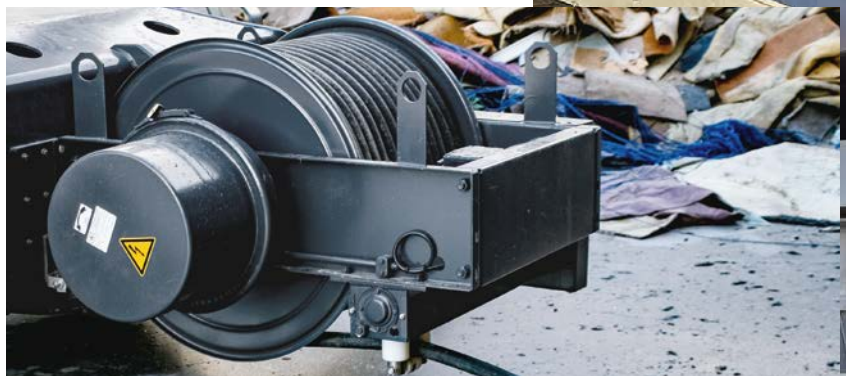


ELECTRIC DRIVEN MATERIAL HANDLER

Electric drives are today's forward-looking trend. This is especially the case with indoor applications, stationary machines, and machines with rail undercarriage, in which powerful zero-emission electric drives that are extremely easy to maintain have very tangible advantages. They include low operating and servicing costs, low noise emissions and heat build-up, and the extensive use of standard components from our range of diesel engine models, which ensures that spare parts will be widely available.

The right connection, every single time: the cable lengths and cable reel designs of Fuchs electric machines are adapted to each customer's specific needs in line with the required reach and the available connection options on site.

Thanks to the Power Pack users of electric driven material handlers can enjoy even greater flexibility. The Power Pack allows electric driven material handlers to be driven from one power socket to the other independently of any external electricity supply. This is made possible by an integrated diesel-powered hydraulic unit.

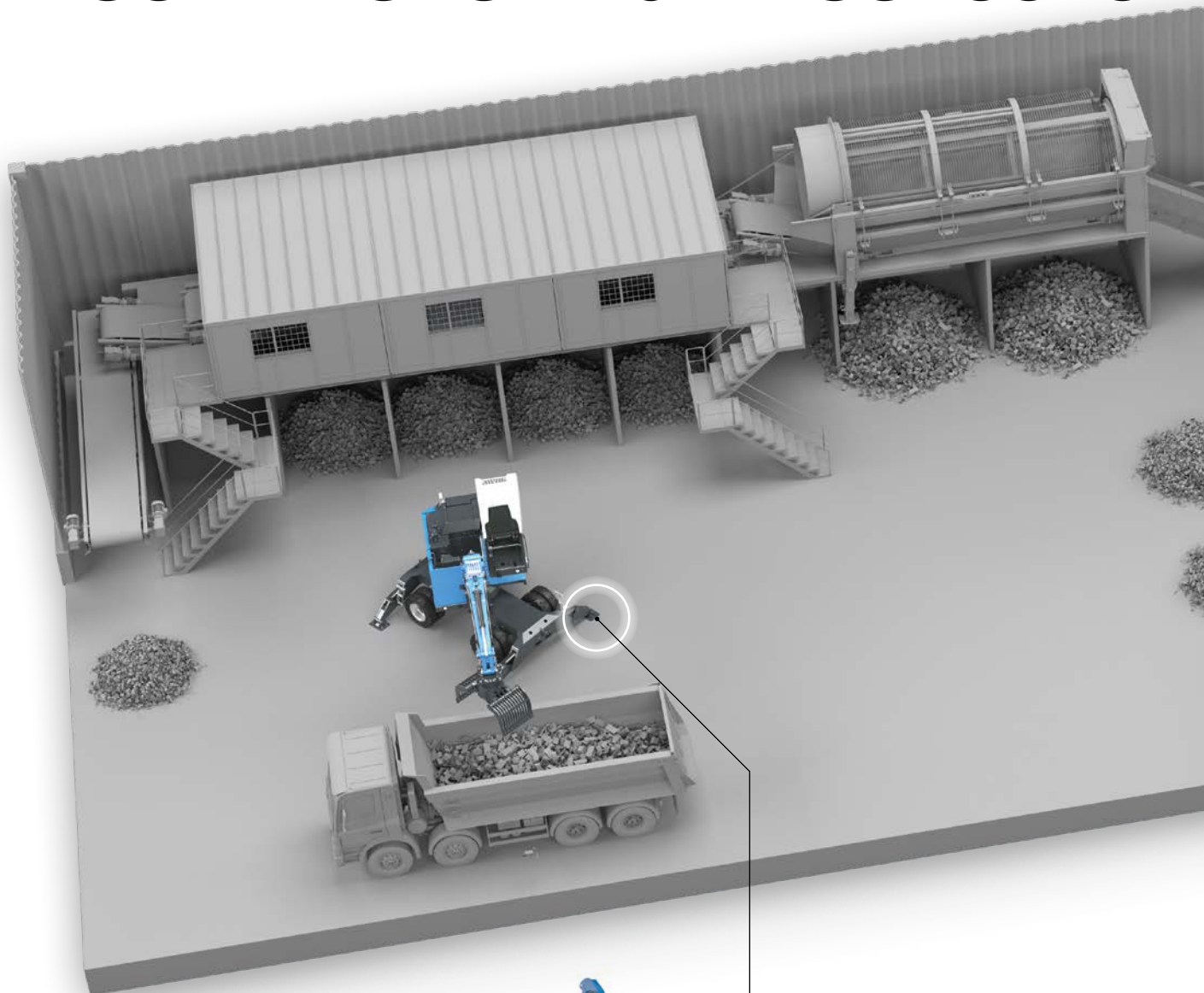


ZERO EMISSION

No exhaust gases, little noise and very little heat output: ideal features when operating indoors or close to residential areas

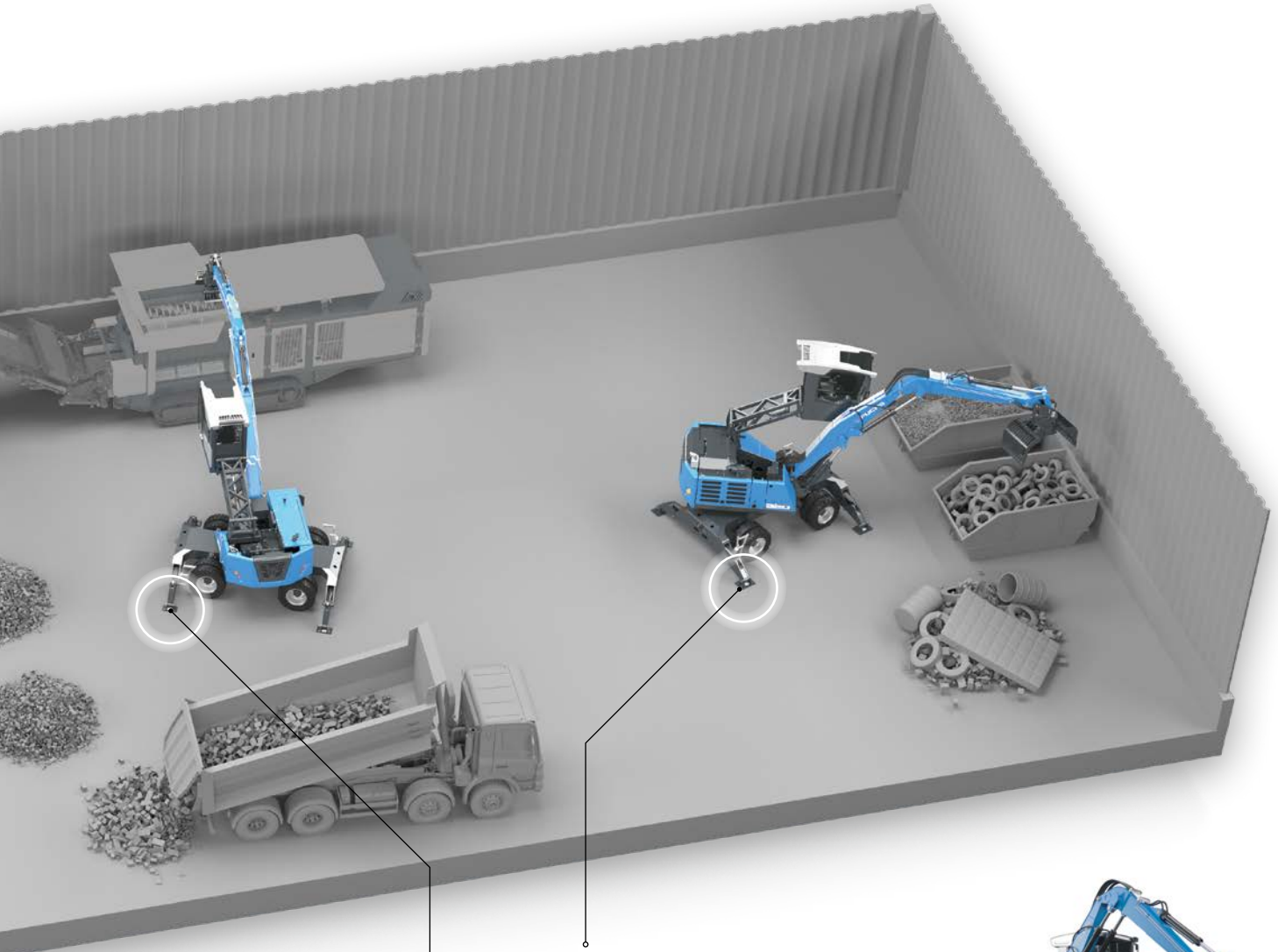


THE PERFECT FUCHS MATERIAL HANDLERS FOR YOUR RECYCLING PROCESSES



FUCHS® MHL310 F LOADING A TRUCK

Engine power: 85 kW
Loading equipment: universal stick
Reach: max. 8.8 m
Attachment: sorting grab



**FUCHS® MHL320 F
SORTING WASTE**

Engine power: 95 kW
Loading equipment: universal stick
Reach: max. 9.2 m
Attachment: sorting grab



**FUCHS® MHL310 F
FEEDING A SHREDDER**

Engine power: 85 kW
Loading equipment: universal stick
Reach: max. 8.8 m
Attachment: sorting grab



MAKE YOUR RECYCLING PROCESSES RUN SMOOTHLY



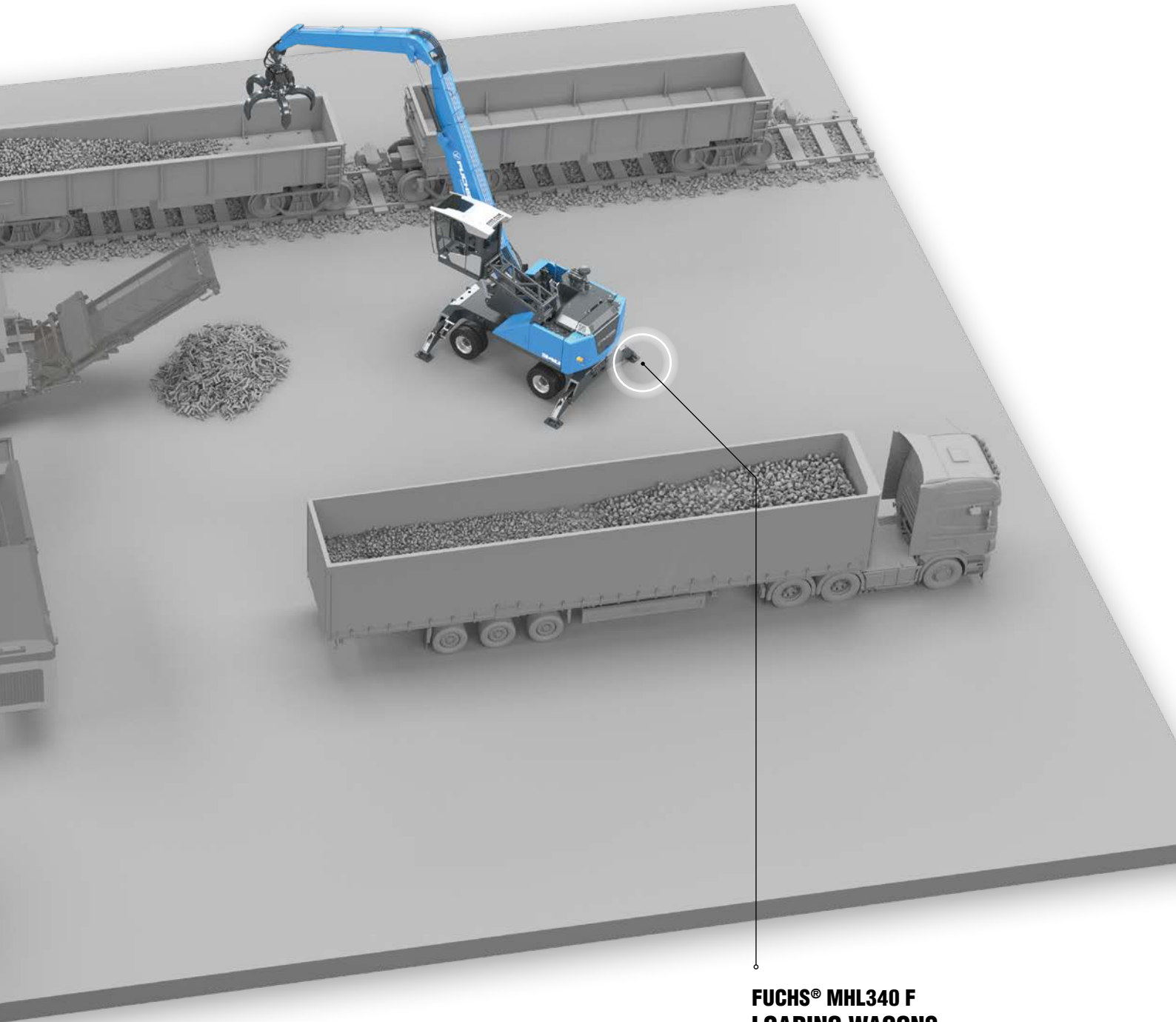
FUCHS® MHL331 F SORTING OF SCRAP WASTE

Engine power: 115 kW
Loading equipment: dipper stick
Reach: max. 12 m
Attachment: magnet plate



FUCHS® MHL340 F FEEDING A SHREDDER

Engine power: 129 kW
Loading equipment: dipper stick
Reach: max. 13.7 m
Attachment: cactus grab



**FUCHS® MHL340 F
LOADING WAGONS
AND LORRIES**

Engine power: 129 kW
Loading equipment: dipper stick
Reach: max. 13.7 m
Attachment: cactus grab



MHL310



85 kW



75 kW



14.6–17.1 t



5.3 m

Loading equipment

- with dipperstick 9 m
- with universal stick 8.8 m

Turning radius

- without all-wheel steering 7.1 m
- with all-wheel steering 4.5 m

Undercarriage mobile

- 4-point stabilizers
- dozer blade in addition to 4-point stabilizers
- 2-point stabilizers and support blade



Engine power
EU-Stage V

Electric motor

Max. service weight
without attachments

Max. viewing height





DESIGNED FOR USE IN CONFINED SPATIAL CONDITIONS

All-wheel steering (optional) reduces the turning circle by up to 35%. Assistance systems like the handy height and reach limit ensure elevated safety for material handling in low halls. A short rear-end radius minimizes the risk of collision when slewing.



CLOSED SLEWING DRIVE

Agile slewing increases productivity and energy efficiency. The enclosed slewing gear simultaneously holds more capacity for the boom and dipper stick—**unique in this class.**



MHL320



95 kW



95 kW



75 kW



21.0 t



5.3 m

Loading equipment

- with dipperstick 9.5 m / 10.4 m
- with universal stick 8.2 m / 9.2 m

Turning radius


- without all-wheel steering 7.1 m
- with all-wheel steering 4.5 m

Undercarriage mobile


- 4-point stabilizers
- dozer blade in addition to 4-point stabilizers
- 2-point stabilizers and support blade




 Engine power
EU-Stage V

 Engine power
EU-IIIa / EPA-Tier 3

 Electric motor

 Max. service weight
without attachments

 Max. viewing height



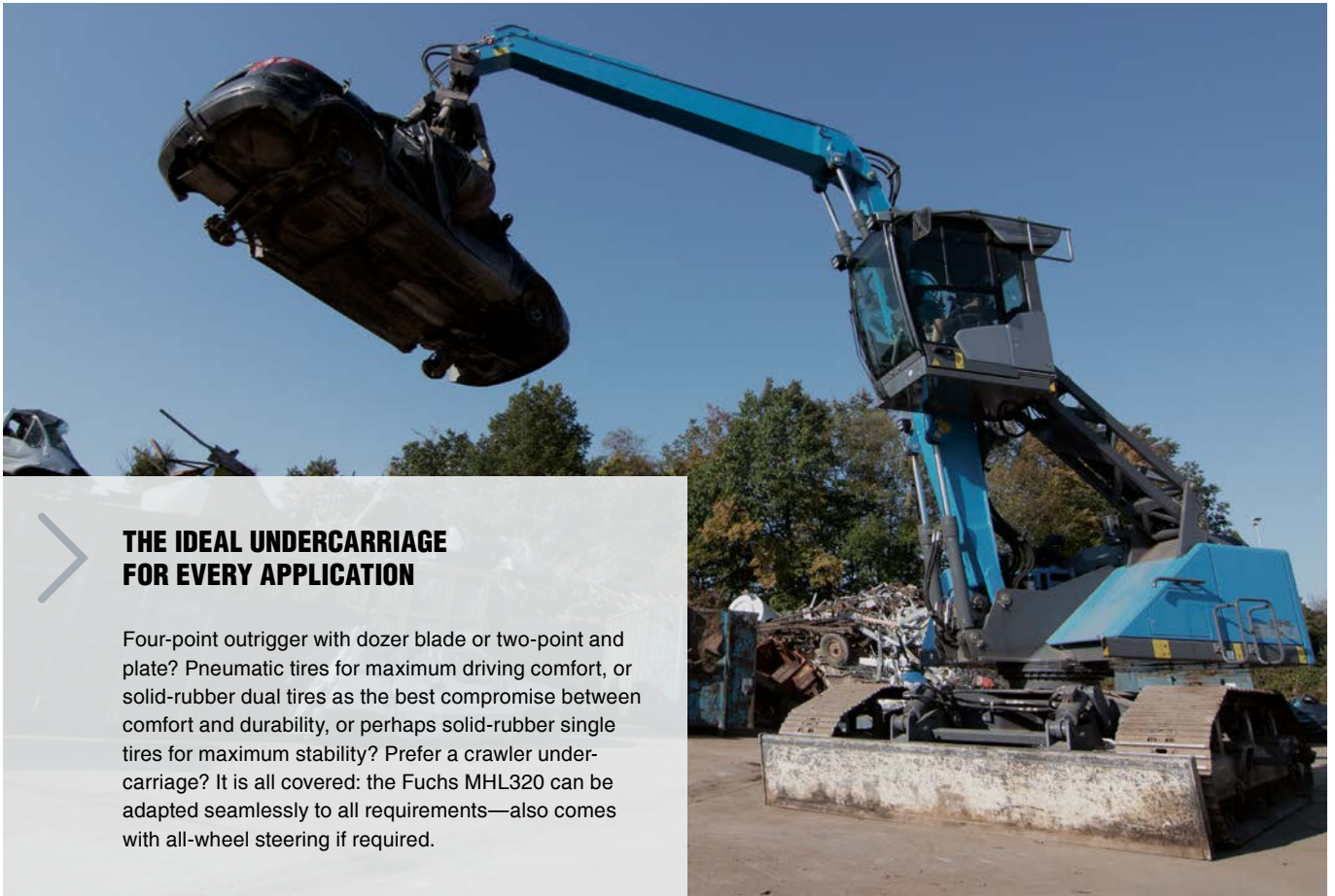
PRECISE SORTING WORK

The universal stick with a reach of 9.2 meters is fitted with lifting cylinder cushioning as standard. In conjunction with the precise hydraulics, the driver can perform sorting work with extreme accuracy.



**OPTIMUM COOLING PERFORMANCE—
EVEN IN DUSTY ENVIRONMENTS**

Radiators amply distanced from each other, coarse-meshed radiators, and standard reversing fan ensure optimum cooling performance, even in dusty environments.



THE IDEAL UNDERCARRIAGE FOR EVERY APPLICATION

Four-point outrigger with dozer blade or two-point and plate? Pneumatic tires for maximum driving comfort, or solid-rubber dual tires as the best compromise between comfort and durability, or perhaps solid-rubber single tires for maximum stability? Prefer a crawler undercarriage? It is all covered: the Fuchs MHL320 can be adapted seamlessly to all requirements—also comes with all-wheel steering if required.



MHL331



115 kW



115 kW



90 kW



24.2 t



5.3 m

Loading equipment

- with dipperstick 11 m / 12 m
- with universal stick 10.7 m

Turning radius

- 7.9 m

Undercarriage mobile

- 4-point stabilizers
- dozer blade in addition to 4-point stabilizers
- 2-point stabilizers and support blade



Engine power
EU-Stage V



Engine power
EU-IIIa / EPA-Tier 3



Electric motor



Max. service weight
without attachments



Max. viewing height



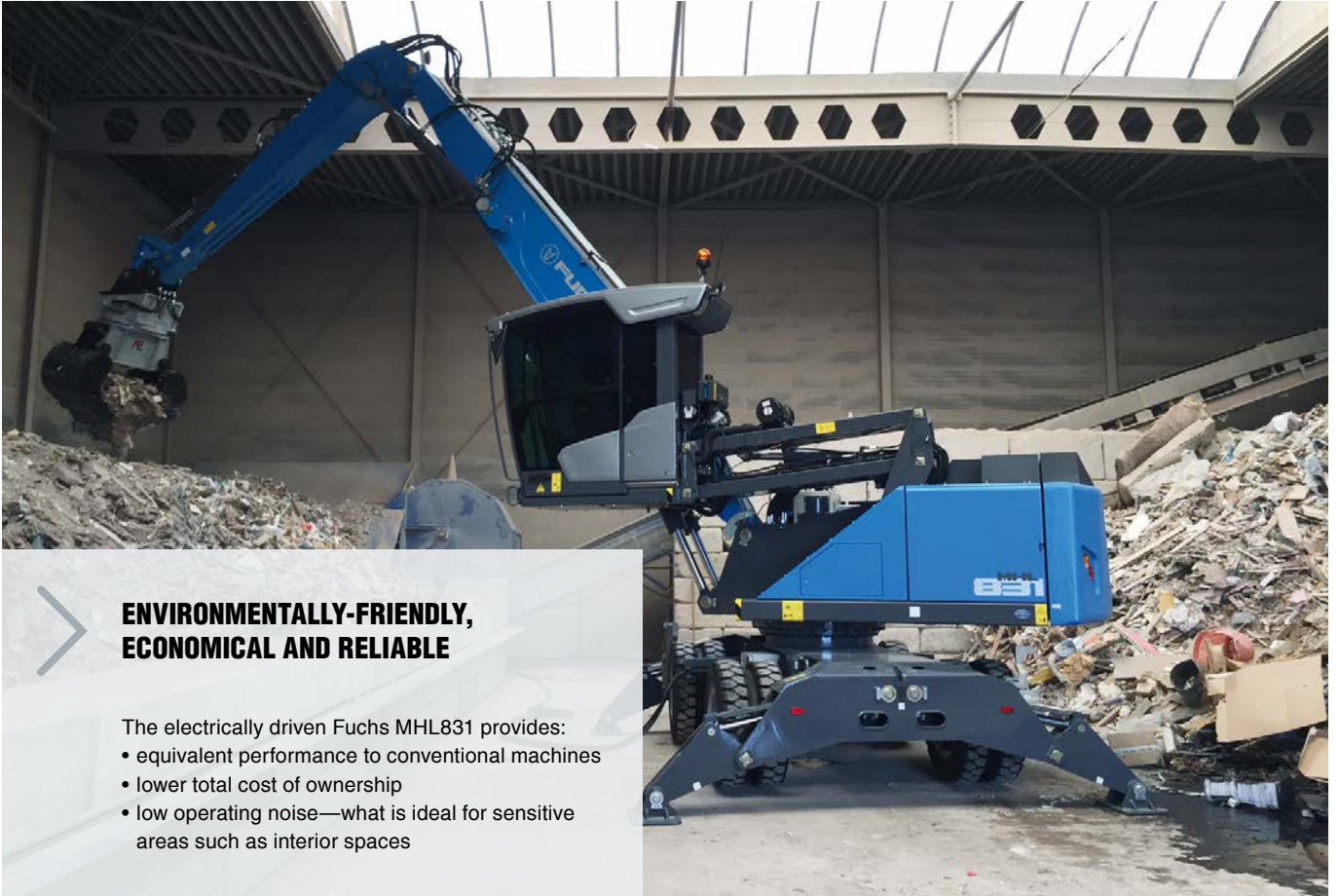
COMPACT AND POWERFUL

The Fuchs MHL331 impresses with a maximum reach of 12 meters. The efficient diesel engine ensures the necessary power, while the exhaust cleaning system keeps emissions extremely low. As with all Fuchs material handlers, this machine can also be supplied as a zero-emission model with electric drive.



**THE UNDERCARRIAGE FOR
PROFESSIONAL MATERIAL
HANDLING IN SMALL SPACES**

The Fuchs MHL331 sits on very solid 2.5-meter axles. Thanks to the compact design of the undercarriage, it deals with tight passages like child's play.



**ENVIRONMENTALLY-FRIENDLY,
ECONOMICAL AND RELIABLE**

- The electrically driven Fuchs MHL831 provides:
- equivalent performance to conventional machines
 - lower total cost of ownership
 - low operating noise—what is ideal for sensitive areas such as interior spaces



MHL335



115 kW



115 kW



90 kW



25.5 t



5.3 m

Loading equipment

- with dipperstick 11 m / 12 m
- with universal stick 10.7 m

Turning radius

- 8.2 m

Undercarriage mobile

- 4-point stabilizers
- dozer blade in addition to 4-point stabilizers



Engine power
EU-Stage V



Engine power
EU-III A / EPA-Tier 3



Electric motor



Max. service weight
without attachments



Max. viewing height



PURPOSE BUILT LOADING EQUIPMENT

The loading equipment with universal stick and 10.7-meter reach enables precise sorting work to the farthest angle. The standard lifting cylinder cushioning reduces the vibrations of the loading equipment considerably and simplifies loading operations.



**OUR LOADING EQUIPMENT:
SPECIALIZED IN EFFICIENT
MATERIAL HANDLING**

In conjunction with orange-peel grabs, the straight loading equipment ensures for maximum material handling with minimal fuel consumption, powered by state-of-the-art, low-emission diesel engines.



24/7 MACHINE MANAGEMENT

Fuchs loading machines equipped with telematic system as standard. Operating temperatures, fuel consumption, service reminders, or geo-fencing. All of this just a few clicks away and available 24/7.

MHL340



129 kW



128 kW



110 kW



30.6 t



5.6 m

Loading equipment

- with dipperstick 12.6 m / 13.7 m
- with universal stick 12.2 m

Turning radius

- 8.3 m

Undercarriage mobile

- 4-point stabilizers
- dozer blade in addition to 4-point stabilizers



Engine power
EU-Stage V



Engine power
EU-IIIa / EPA-Tier 3



Electric motor



Max. service weight
without attachments



Max. viewing height



ALL-ROUNDER

Whether it is domestic, industrial or municipal waste, C & D, or scrap: our Fuchs MHL340 is the perfect choice for (almost) all demands.

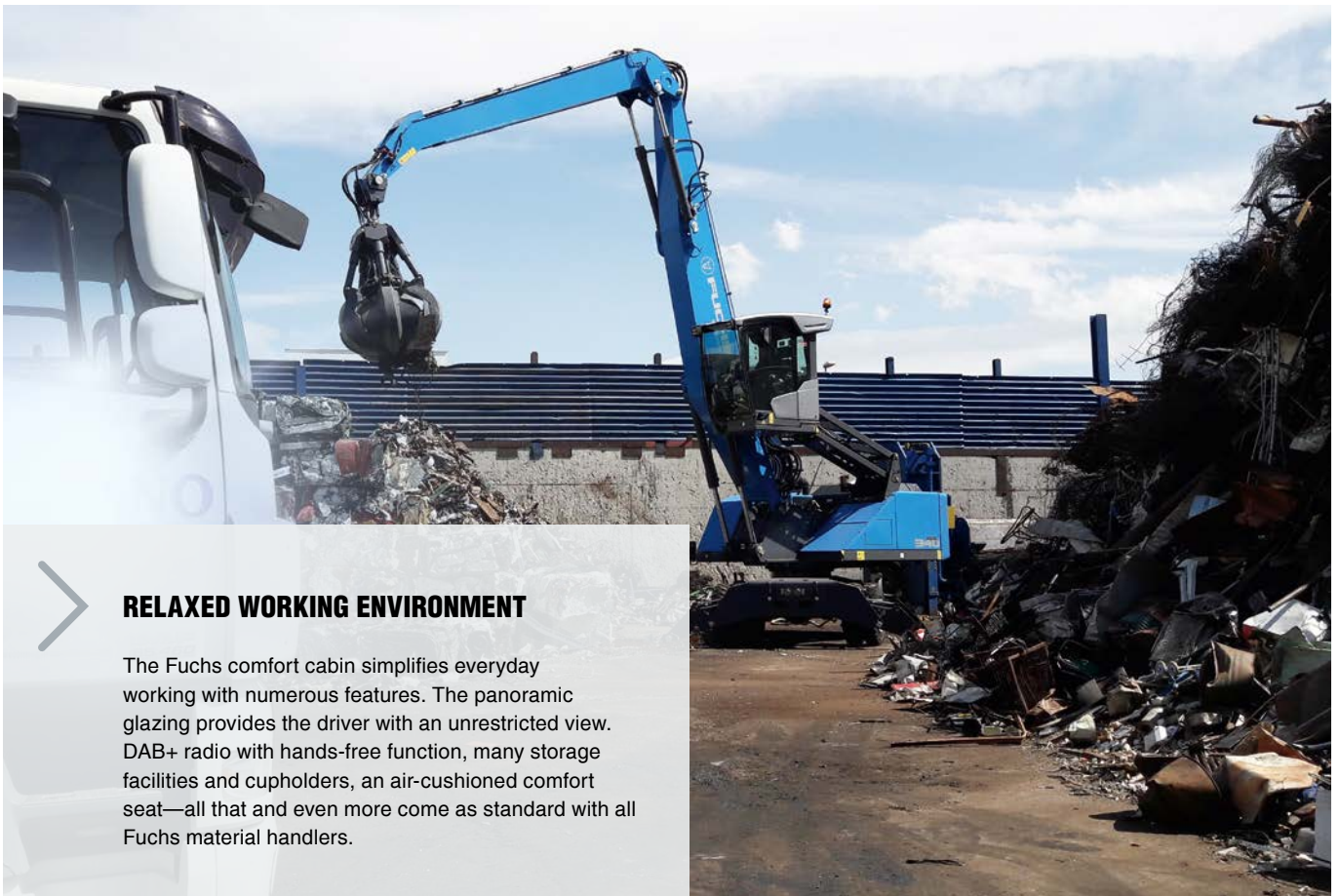




ONE OF THE MOST EFFICIENT COOLING SYSTEMS

Radiators physically separated from each other, temperature-controlled fans, including reversing function, and direct air flow without sandwich designs: this is standard in all Fuchs loading machines.





RELAXED WORKING ENVIRONMENT

The Fuchs comfort cabin simplifies everyday working with numerous features. The panoramic glazing provides the driver with an unrestricted view. DAB+ radio with hands-free function, many storage facilities and cupholders, an air-cushioned comfort seat—all that and even more come as standard with all Fuchs material handlers.

SAFETY FEATURES

CLOSE RANGE SHUT-OFF SYSTEM



BLOCKING OF DRIVE AND WORK FUNCTIONS



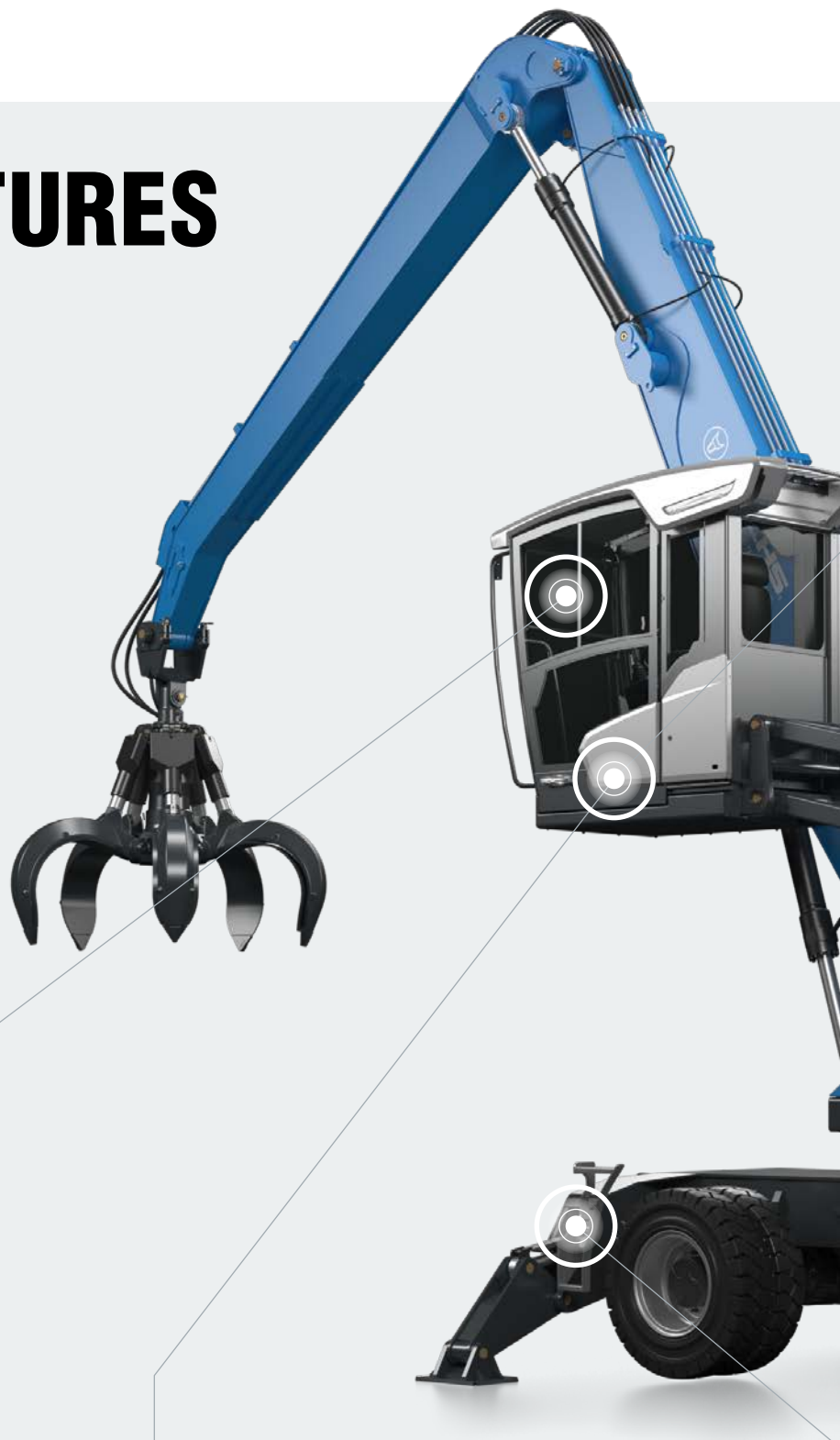
OVERLOAD WARNING DEVICE*



OVERLOAD AND WORK AREA CONTROL*



CABIN COMFORT ACCESS*



*Option



CATWALK WITH HANDRAIL*



SERVICE PLATFORM



KEY-LOCKABLE SWITCH FOR DISCONNECTION OF THE ELECTRICAL ENERGY



ADDITIONAL STEPS AT THE FRONT AND REAR OF UNDERCARRIAGE*



MODULAR SYSTEM

ATTACHMENTS



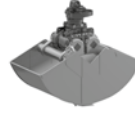
Cactus grab



Timber grapple



Magnet plate



Clamshell grab



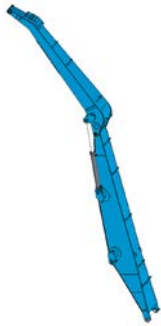
Load hook



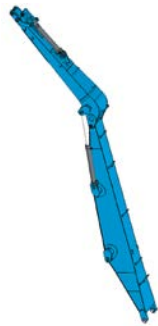
Sorting grapple



WORK EQUIPMENT



Straight



Universal stick



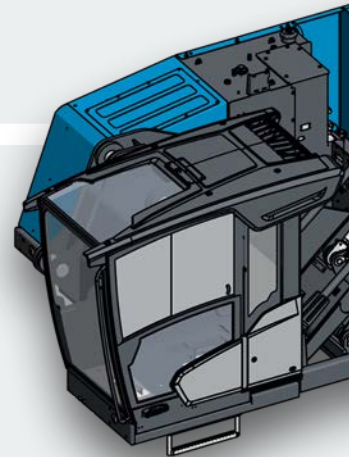
FQC
Fuchs QuickConnect



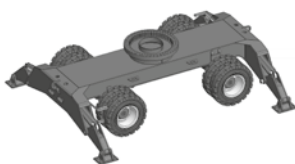
MQC
Multi QuickConnect



BQC
Boom QuickConnect



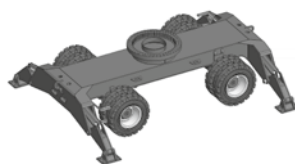
UNDERCARRIAGES



Standard-underrigge



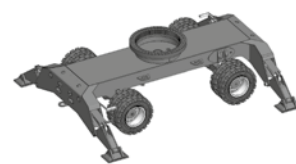
0.8 m



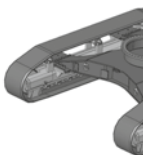
Standard-underrigge



1.4 m

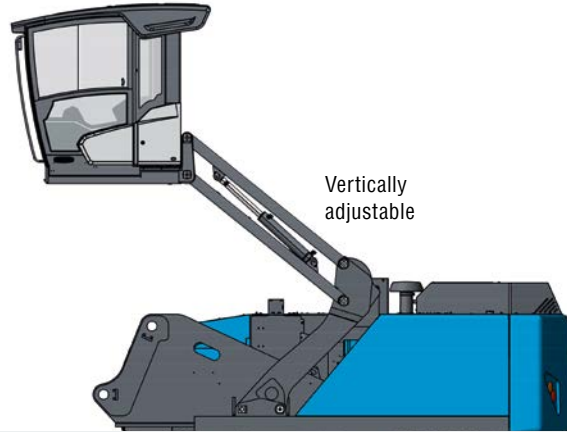


XL-underrigge

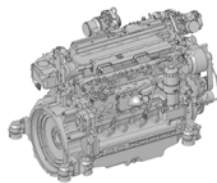


Crawler

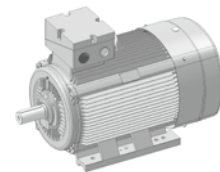
CAB SYSTEMS



ENGINES

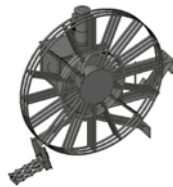


Diesel engine

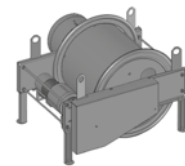


Electric motor

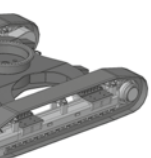
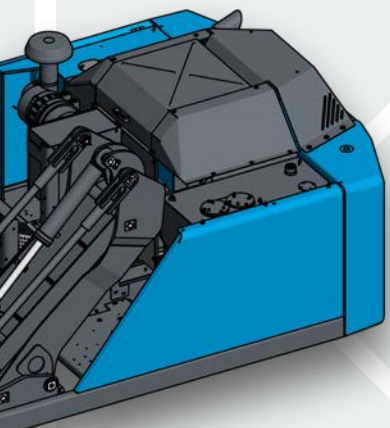
OPTIONS



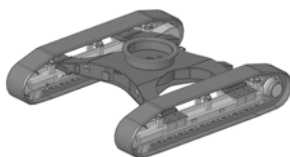
Cable reel



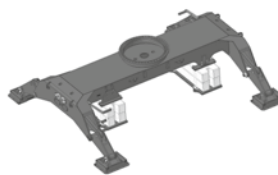
Cable drum



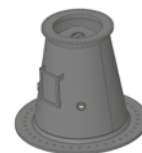
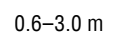
Crawler



AHL Standard-undercarriage



AHL Pylon





WORKS FOR YOU.™

www.terex-fuchs.com

May 2020. Product specifications and prices are subject to change without notice or obligation. The photographs and/or drawings in this document are for illustrative purposes only. Refer to the appropriate Operator's Manual for instructions on the proper use of this equipment. Failure to follow the appropriate Operator's Manual when using our equipment or to otherwise act irresponsibly may result in serious injury or death. The only warranty applicable to our equipment is the standard written warranty applicable to the particular product and sale and Terex makes no other warranty, express or implied. © Terex Corporation 2020 - Terex, the Terex Crown design, Fuchs and Works For You are trademarks of Terex Corporation or its subsidiaries.

Terex® Deutschland GmbH | Industriestraße 3 | 76669 Bad Schönborn | Germany | Fon: +49 (0) 7253 84-0 | Fax: +49 (0) 7253 84-102 | info@terex-fuchs.com

